
Peninsula

■
Function & Conferencing Centre



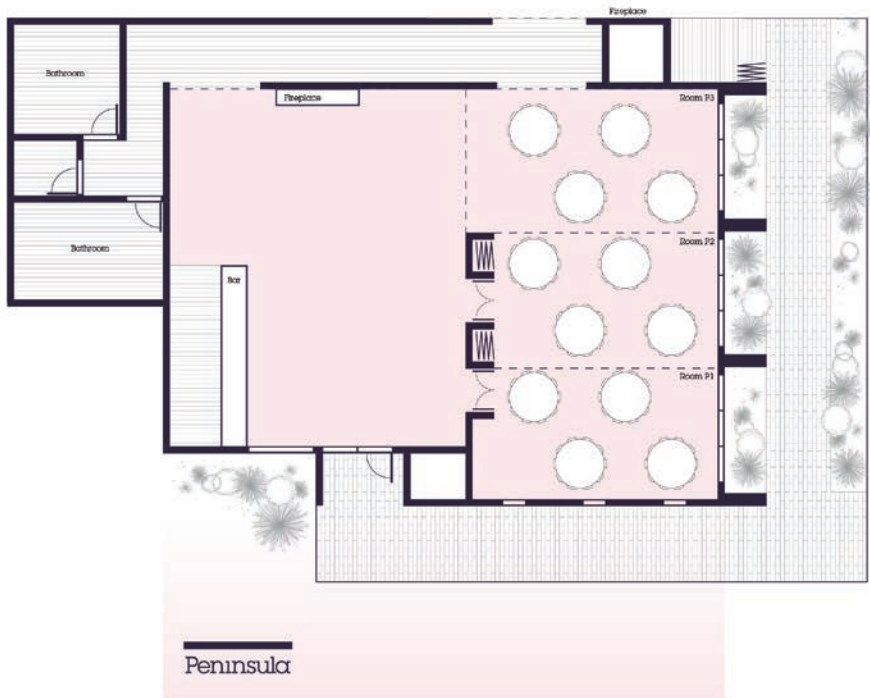
FH

Peninsula



Function & Conferencing Centre

120 Capacity
12 round tables of 10 people

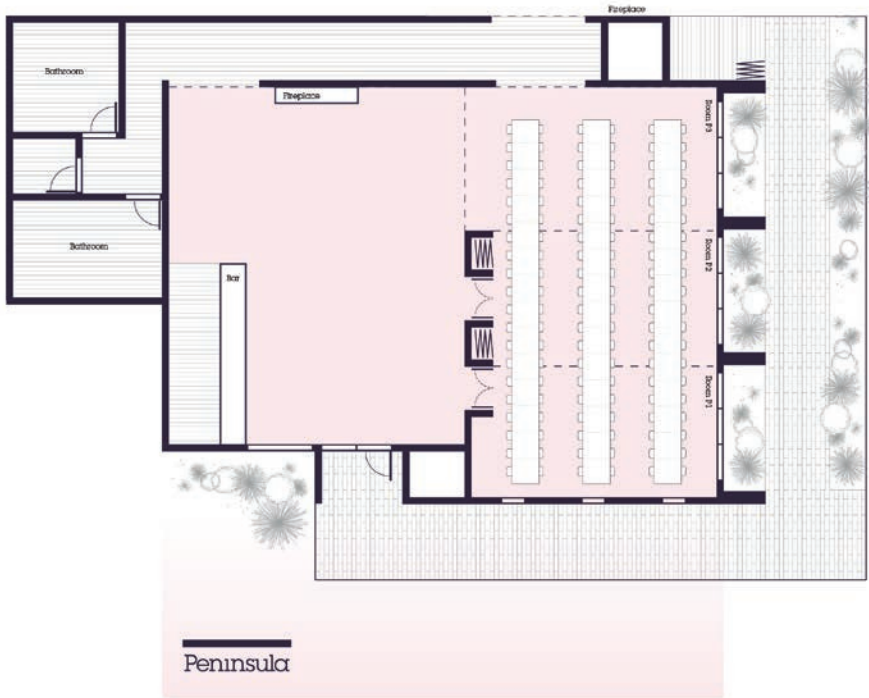


Peninsula



Function & Conferencing Centre

120 Capacity
3 long tables of 40 people

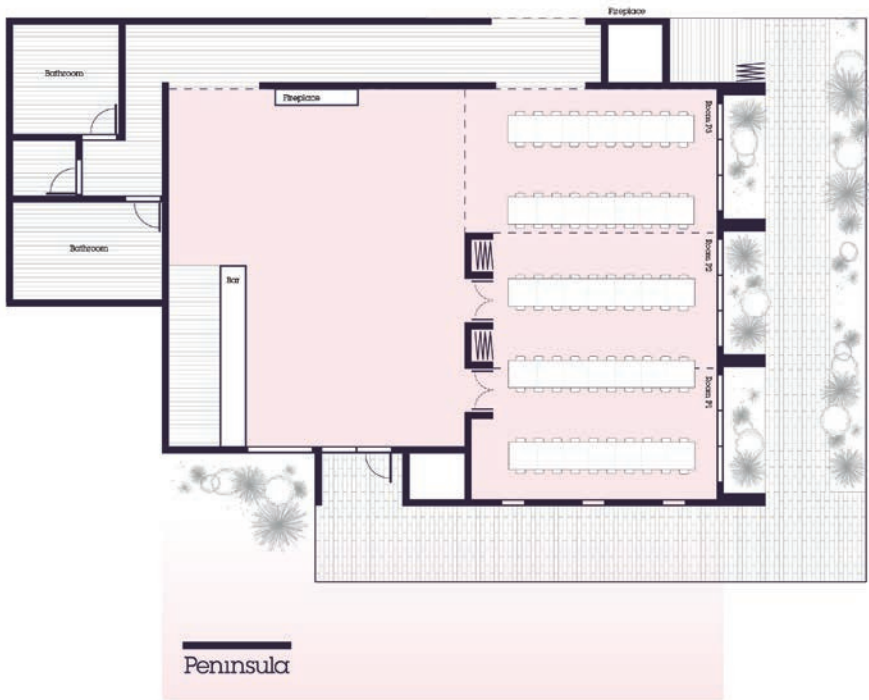


Peninsula



Function & Conferencing Centre

100 Capacity
5 long tables of 20 people

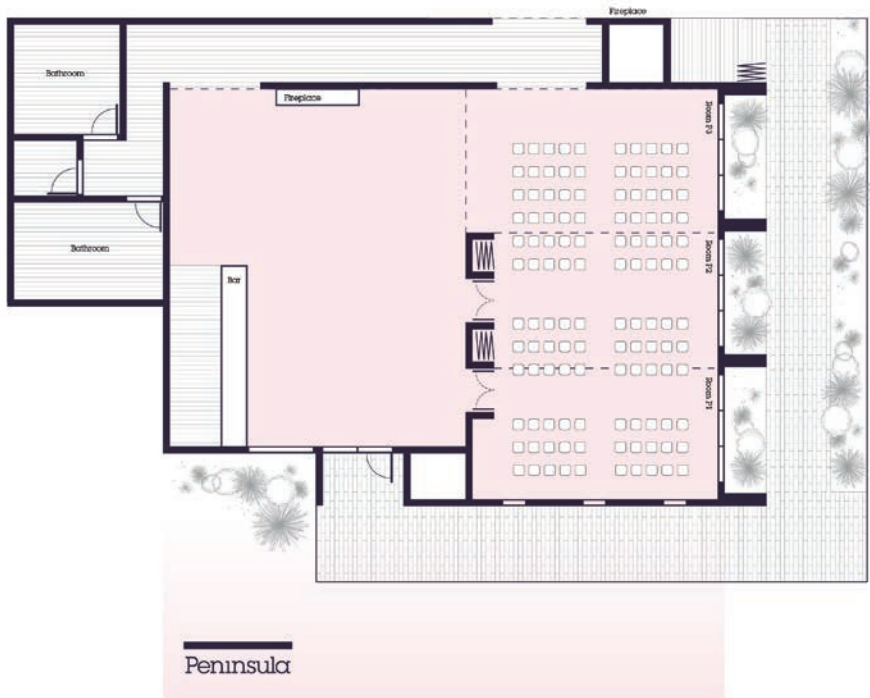


Peninsula



Function & Conferencing Centre

120 Capacity
Theatre style

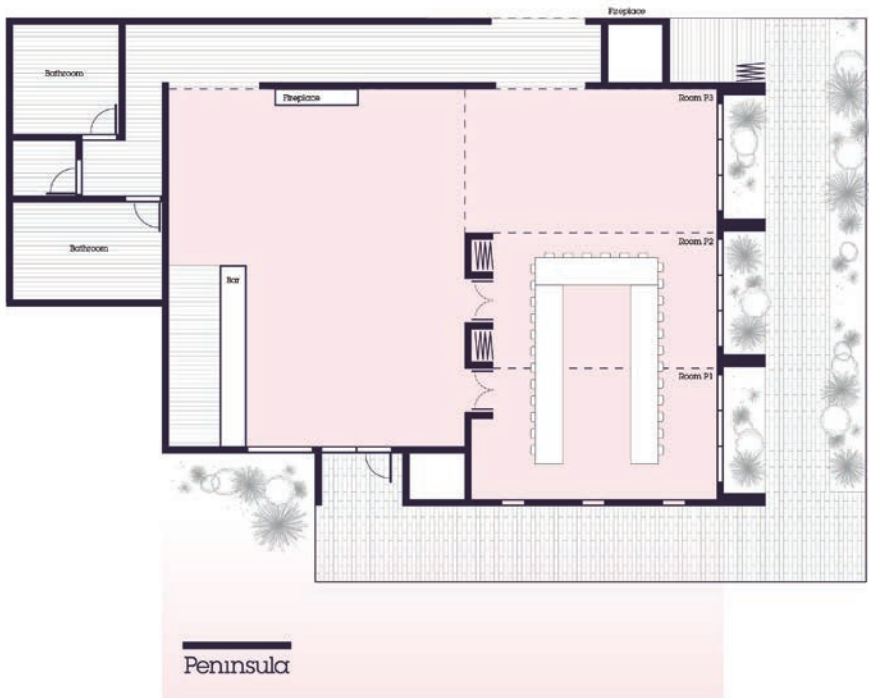


Peninsula



Function & Conferencing Centre

30 Capacity
U-Shape

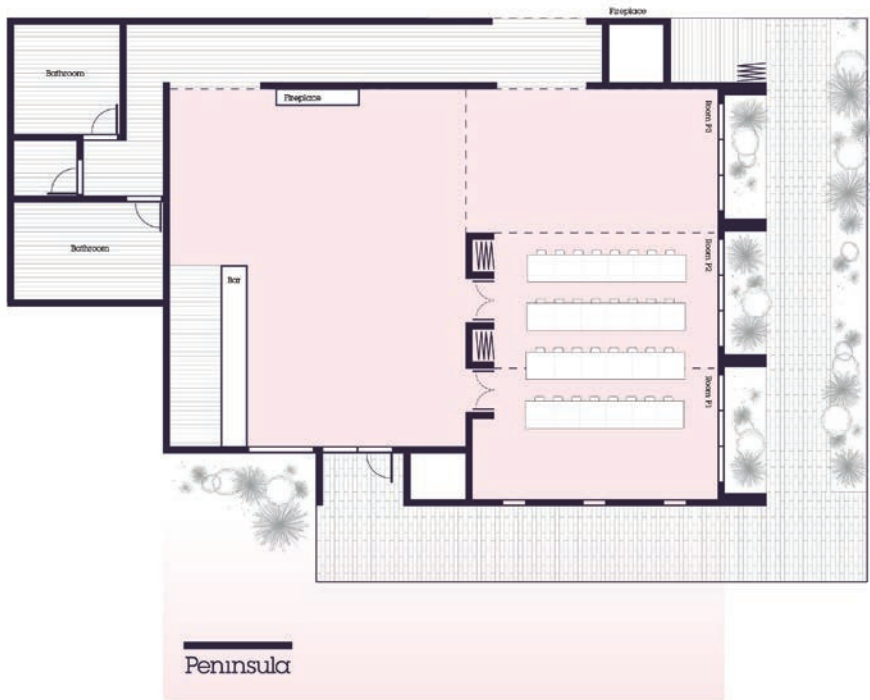


Peninsula



Function & Conferencing Centre

32 Capacity
Classroom

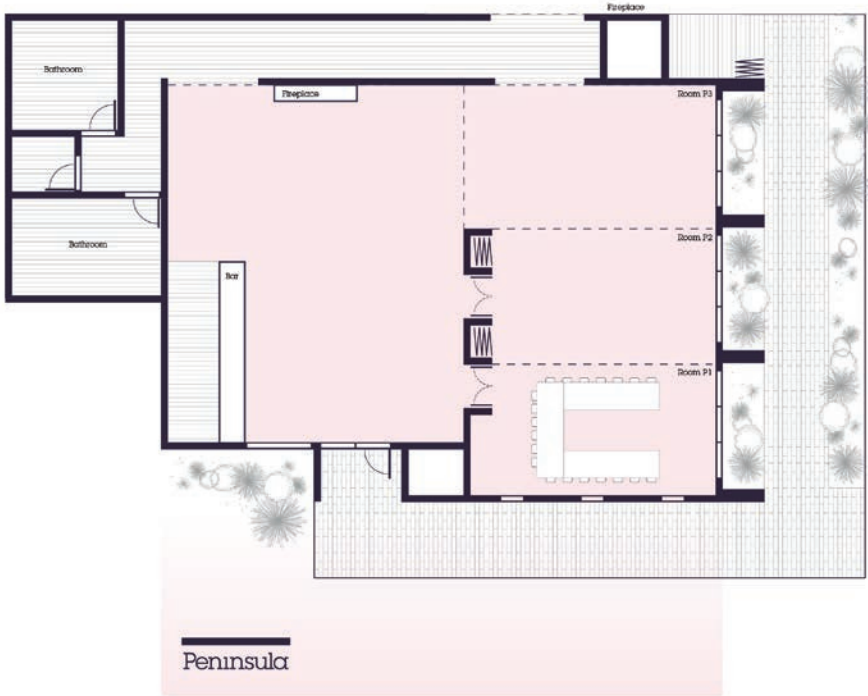


Peninsula



Function & Conferencing Centre

20 Capacity
U-Shape

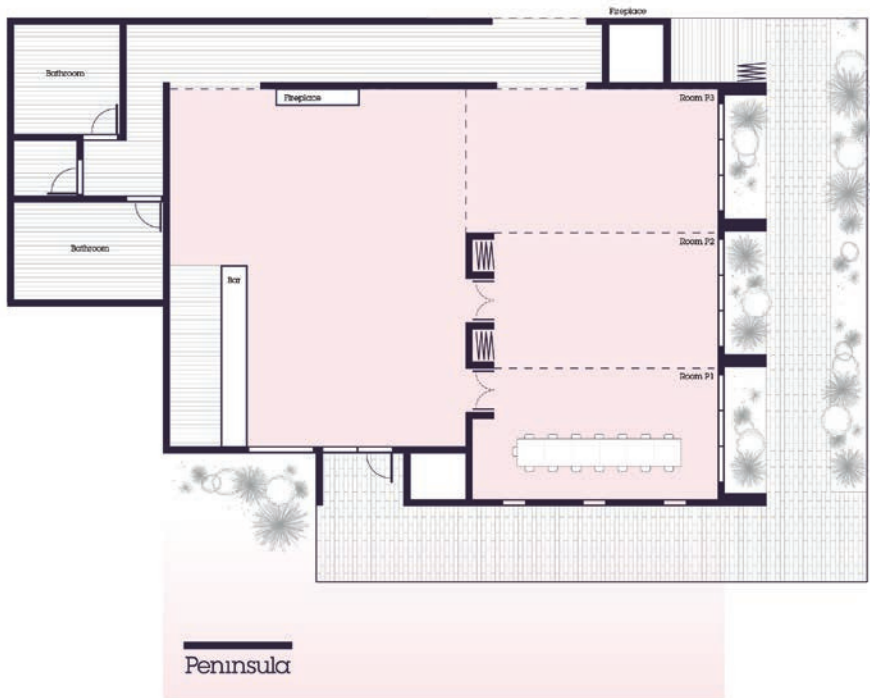


Peninsula

■

Function & Conferencing Centre

15 Capacity
Boardroom



Peninsula

Function & Conferencing Centre

Quick venue break down

Venue	Boardroom	U-Shape	Dining	Theatre	Classroom	Cocktail	Width	Length	Height
Peninsula 1, 2 & 3	NA	40	120	120	50	140	15.01m	9.3m	2.82/2.32m
Peninsula 1	15	20	24	40	15	40	4.97m	9.3m	2.82/2.32m
Peninsula 2	15	20	24	40	15	40	4.97m	9.3m	2.82/2.32m
Peninsula 3	15	20	24	40	15	40	5.07m	9.3m	2.82/2.32m
Peninsula 1 & 2	NA	30	56	80	32	80	9.97m	9.3m	2.82/2.32m
Peninsula Room	NA	NA	140	200	NA	200			

